

台塑南亚 FORMOSA



PVC 导静电型地砖
静电耗散型地砖

SGS



ISO9001
2000

注册证编号: CNAB020-G

应用 APPLICATION

洁净室 CLEANROOMS

Formosa 防静电地砖，依据其50多位研究和制造人员所拥有的高科技知识，能严格满足洁净室10级的要求。安装具有低碳污染，低放射，不受室温和湿度影响，并高度适合有特殊维护要求或技术要求的洁净室，例如半导体、微电子、光学、航空航天、医药、生物技术等行业的洁净室。

Formosa CONDUCTIVE TILE meets requirements in clean rooms as strict as class 10 based on its high-tech know-how by over 740 research and manufacturing staff. It has low carbon contamination and low emission and is independent of room temperature and humidity and is highly suitable for special clean room maintenance techniques; Semiconductor, Microelectronics, Optics, Aerospace, Pharmaceuticals, Biotechnology, etc.

健康护理 HEALTHCARE

Formosa 静电控制地砖，帮助控制由于静电放射导致的非自愿的人体动作，阻止危险的静电放射直接波及病人，及在使用易燃的麻醉剂的时候，预防火灾或爆炸。

Formosa ESD-CONTROL TILE helps control involuntary personnel movement caused by electrostatic discharge, prevent hazardous static discharge directly into patients and prevent fire or explosion where flammable anesthetics are used.

通路地板 ACCESS FLOORING

Formosa 静电控制地砖，适合在通路地板上使用。它可以轻易得被开孔不会导致毛边或导致地砖出现裂纹或裂缝。高架地板或通路地板的主要制造商都有丰富的使用Formosa静电控制地砖的经验。

Formosa CONDUCTIVE TILE is suitable for use on access flooring. It can easily be perforated without risk of rough edges or the tile cracking or breaking. Major manufacturers of raised or access flooring are experienced in the use of Formosa ESD CONTROL TILE.

电子装配制造机及测试区 ELECTRONICS MANUFACTURING ASSEMBLY, TEST AREAS

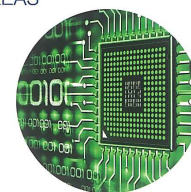
Formosa 静电控制地砖是一种可以永久安装的材料，能帮助保护敏感电子设备、装配机，以及保护产品免受人为制造的静电干扰。

Formosa CONDUCTIVE TILE is a permanently installed material that helps protect sensitive electronic devices, assemblies, and products from personnel-generated electrostatic discharge.

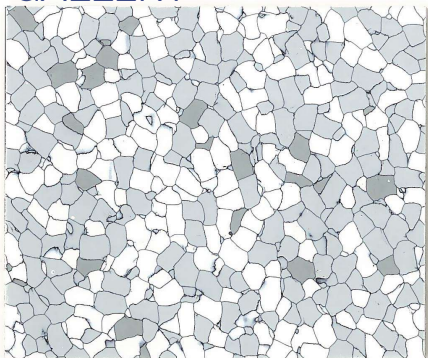
计算机或电子设备以及电信环境 COMPUTER AND ELECTRONIC EQUIPMENT AND TELECOMMUNICATIONS ENVIRONMENTS

Formosa 静电控制地砖，能对进入到电脑终端或其他敏感电子设备的静电放射问题，进行良好的控制，以阻止对内部电路的破坏，非正常的进入或恢复，及计算机失忆或其他误操作。它能保护大型数据处理设备，计算机化的排版和制图设备，远程控制设备，通信设备，及其他静电敏感的设备及仪器。

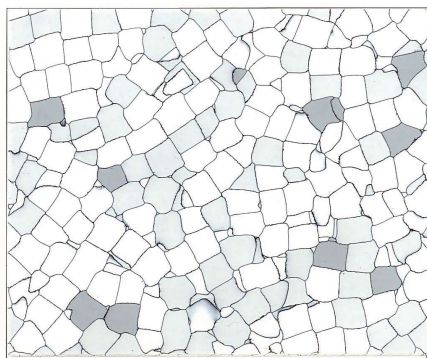
Formosa ESD-CONTROL TILE controls static discharges into computer terminals or other sensitive electronic equipment, thus preventing damage to internal circuitry, incorrect entries or retrieval loss of computer memory or other malfunction. It protects large data processing facilities, computerized typesetting and drafting equipment, process control equipment communication installations and other static sensitive equipment and instrument.



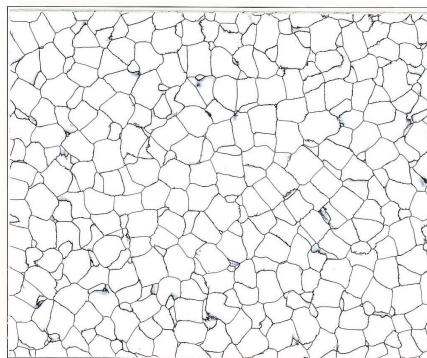
我们的产品 PRODUCT GALLERY



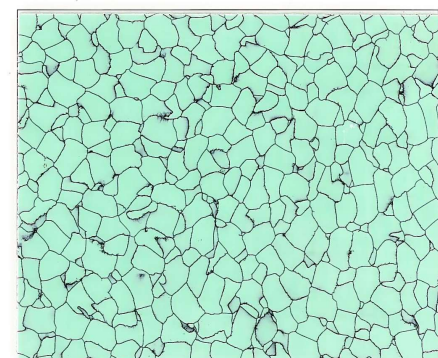
TSNY-003#



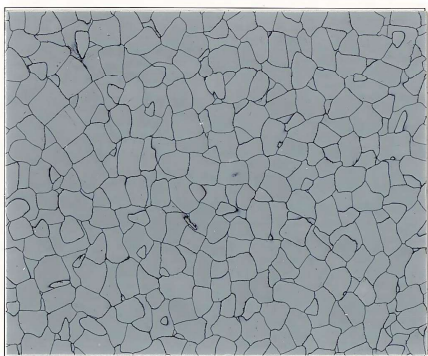
TSNY-19#



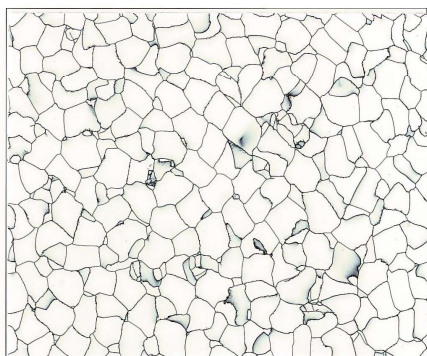
TSNY-9303#



TSNY-9306#



TSNY-22#







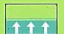



TSNY-1101#



Formosa

Formosa 导静电型地砖及静电耗散型地砖
尺寸 (正方形) : 600 × 600 mm(24")
表面光泽: 亮 900 × 900 mm(36")

ITEM 项目		Formosa ESD-CONTROL TILE 静电控制地砖	
		导电地砖 Formosa CONDUCTIVE TILE	静电耗散型地砖 Formosa STATIC-DISSIPATIVE TILE
	分类 CEN CLASSIFICATION En685	等级Class 34+43	等级Class 34+43
	厚度 THICKNESS En428	2.0mm,3.0mm	2.0mm,3.0mm
	尺寸 SIZE En427	600 × 600 mm (24") 900 × 900 mm (36")	600 mm (24") 900 mm (36")
	重量/平方米 WEIGHT/M2 En430	3.2kg(2.0mm) 5.4kg(3.0mm)	3.2kg(2.0mm) 5.4kg(3.0mm)
	电阻 ELECTRICAL RESISTANCE DIN 51953 ASTM F-150 OR NFPA99	2.5 × 10 ⁴ to 10 ⁹ ohm	10 ⁹ to 10 ⁹ ohm
	静电生成 STATIC GENERATION AATCC-134	Less than 100 volts with conductive footwear per AATCC-134 at 20% relative humidity.	Less than 300 volts with conductive footwear per AATCC-134 at 20% relative humidity.
	静弱 STATIC DECAY Federal Test Method 101, Method 4046	5,000volts to zero in less than 0.01 seconds per Federal Test Method 101,Method 4046 at 15% relative humidity.	5,000volts to zero in less than 0.2 seconds per Federal Test Method 101,Method 4046 at 15% relative humidity.
	阻热性 HEAT RESISTANCE DIN51612	0.00618m ² K/W(2.0mm)	0.00618m ² K/W(2.0mm)
	热导 THERMAL CONDUCTIVITY DIN51612	0.309W/m.K	0.309W/m.K
	防火性 FIRE RESISTANCE DIN4102 ONORM B3810	B1 B1 Q1	B1 B1 Q1
	关键放射流量 Critical Radiant Flux ASTM E-648 or NFPA 253	>1.08 W/cm ² (Class 1 Interior Floor Finish,NFPA Life Safety Code 101)	>1.08 W/cm ² (Class 1 Interior Floor Finish,NFPA Life Safety Code 101)
	火焰蔓延性 Flame Spread ASTM E-84 or NFPA 225	<75	<75
	烟浓度 Smoke Density ASTM E-662	<450	<450

	耐磨损 ABRASION RESISTANCE ASTM D-1044 CS-10-F Wheel, 500 Gm Weight	Cycles %Gauge Loss 2,500 .40 5,000 .80 7,500 1.20 10,000 1.60	Cycles %Gauge Loss 2,500 .40 5,000 .80 7,500 1.20 10,000 1.60
	耐磨性 RESISTANCE TO WEAR EN660-1/DIN51963	M	M
	残余凹陷 RESIDUAL INDENTATION EN433/DIN51955	0.03mm(2.0mm) 0.04mm(3.0mm)	0.03mm(2.0mm) 0.04mm(3.0mm)
	尺寸稳定性 DIMENSIONAL STABILITY En434	≥0.10%	≥0.10%
	转轮椅使用效果 EFFECT OF CASTOR CHAIR En425	No damage	No damage
	色固度 COLOR FASTNESS ISO 105 B02	At least 6	At least 6
	耐化学性 RESISTANCE TO CHEMICALS DIN423/DIN51958	Offers excellent resistance, ask for special sheet	Offers excellent resistance, ask for special sheet
	冲击音吸收 IMPACT SOUND ABSORPTION VII, ISO 140,ISO717	Approx 2dB	Approx 2dB
	健康护理设施标准 STANDARD FOR HEALTH CARE FACILITIES NFPA99	Confirms to the requirement of NFPA 99 in effect at the time of installation	

SGS



ISO9001
2000

国家认证证书号: CNAB020-D

维护 CARE and MAINTENANCE

由于它具有表面不渗透的性能，泥土和尘垢能从Formosa防静电及散静电地砖的表层彻底清除。与其他的地面材料一样，浅色比深色更容易弄脏，因而需要更频繁和彻底的清洁。

用机器擦头及好的中型洗涤剂来清洁地面，接着用清水冲洗。微脏的地面可以用湿拖把擦，但也应该定期用机器擦。严重脏或带黑点可以用地面清洁机器来清洁，人造的清洁垫等其他商用的清除方法。在任何擦或清除操作之后，务必用清水冲洗清除所有残余的清洁剂。

地面应用喷雾抛光来维护。该过程产生一个中度到高度的光泽，并提供额外的保护防止划痕或刮擦。

喷抛过程除外，蜡或地面涂层不应该被用Formosa导电地砖或散静电地砖上。规则的使用蜡或地面涂层会造成地面一层绝缘膜。

如果想要一种湿的效果，建议使用一种高速抛光机器(750RPM或更大)。欲知详情，欢迎联系我们。

Due to its non-porous surface Formosa Conductive tile and Static-Dissipative tile has a surface from which soil and grime can be removed. As with any floor, lighter colors show soil more readily than darker colors and therefore require more frequent and thorough cleaning. Clean floor by machine-scrubbing with a good neutral detergent, followed by clear water rinsing. Lightly soiled floors may be damp mopped but also should be periodically machine-scrubbed. Severe soiling or black marking can be removed with a floor cleaning machine synthetic stripping pad and a commercial stripping solution. Clear water rinsing is necessary after any scrubbing or stripping operation to remove all cleaner residue.

Flooring should be maintained by spray-buffing. This procedure produces a moderate to high gloss and provides additional protection from marking and scuffing.

Waxes or floor finishes should NOT be used on Formosa Conductive tile and Static-Dissipative tile except in a spray-buffing procedure. The regular application of a wax or floor finish will build up an insulating film on the floor.

If a high-gloss "wet look" is desired, it is advisable to use a high speed burnishing machine (750RPM or more).

For detailed information, please ask us.

安装 INSTALLATION

Formosa防静电地砖或静电耗散型地砖应该被安装在水平的，光滑的，无裂缝的底层地板上。残余湿度应该根据CM DUMB 测试在2.5%以下。地砖，胶水及安装区应达到安装前24小时内至少18度的温度，不必在底层地板上应用铜条，用质量好的105欧姆以下的导电胶水来粘地砖。焊接仅在潮湿的地区，洁净室及功能影剧院里推荐使用。关于进一步的安装细节问题，欢迎联系我们。

Formosa Conductive tile and Static-Dissipative tile should be installed on sub floors that are leveled, smooth and free of cracks. Residual humidity should be under 2.5% tested with the CM Dumb test. Tiles, adhesive and installation site should reach a temperature of at least 18°C at least 24 hours before installation. Not necessary is to apply copper strip on subfloor use a good quality conductive adhesive under 10⁵ Ohm to glue the tiles.

Welding is only recommended in wet areas, cleanroom application and Operating theatres. For further details on installation methods, please ask us.

台塑南亚 Formosa



保证 WARRANTY

Formosa公司保证，在购买之后的一年内，产品绝无材料及工艺上的缺陷，如果遵照Formosa所推荐的程序进行安装和维护时，Formosa公司进一步保证其10年的保质期。

这些保证不包括由于以下原因引起的不满，问题或损坏：(1)安装工艺不当；(2)未遵照Formosa所推荐的程序进行安装和维护(推荐的安装和维护指南可从你的经销商处得到，或直接联系Formosa公司)；(3)由于使用而导致光泽度下降；(4)由于意外，破坏性的挖扣，磨蹭，刮擦或者凹坑等引起的损坏；(5)由于底层平板的不规范，包括但不限于潮湿，碱性，静液压等。

以上保证明确取代任何其他明确或暗含的保证，包括但不限于，任何暗含的商务可行性或特殊用途适用性的保证。

Formosa CO., Ltd. Warrants, for a period of one (1) year after purchase, that its products are free from defects in materials and workmanship, and further warrants, for a period of five (5) years after installation that when installed and maintained in accordance with procedures recommended by Formosa CO., Ltd.

THESE WARRANTIES DONOT COVER (1) workmanship of installation (2) dissatisfaction, problems or damage due to installation or maintenance other than as recommended by Formosa CO., Ltd. (Recommended installation and maintenance instructions are available from your dealer or by writing Formosa CO., Ltd. Customer Services Team); (3) reduction in gloss from use; (4) damage due to accidents, gouges, scuffs, scratches or indentations; or (5) dissatisfaction, problems or damage due to irregularities caused by subfloor, including but not limited to moisture, alkali or hydrostatic pressure in subfloor.

THESE WARRANTIES ARE EXPRESSLY IN LIEU OF ANY OTHER WARRANTIES, EXPRESS OR IMPLIED, INCLUDING BUT NOT LIMITED TO, ANY IMPLIED WARRANTY OF MERCHANTABILITY OR FITNESS FOR A PARTICULAR PURPOSE.

质量控制/技术支持 QUALITY CONTROL/TECHNICAL ASSISTANCE

- 1) 在发货前，在生产任何阶段，测试导电性。
- 2) 运输前，测试每一批导电胶水的电阻。
- 3) Formosa 销售代表，会在评估现场安装条件及视察实际安装技术方面，为您提供技术支持。

- 1) Test for conductivity throughout various stages of production and before being released.
- 2) Test each batch of conductive adhesive for electrical resistance before shipment.
- 3) Formosa CO., LTD. sales representatives are available to provide technical assistance in evaluation of on site installation condition or to review actual installation techniques.

台塑南亚

FORMOSA

Welcome to our company

B U S I N E S S E M P L A T E